

A bright yellow, cloud-like graphic with four rounded lobes, centered on the left side of the page.

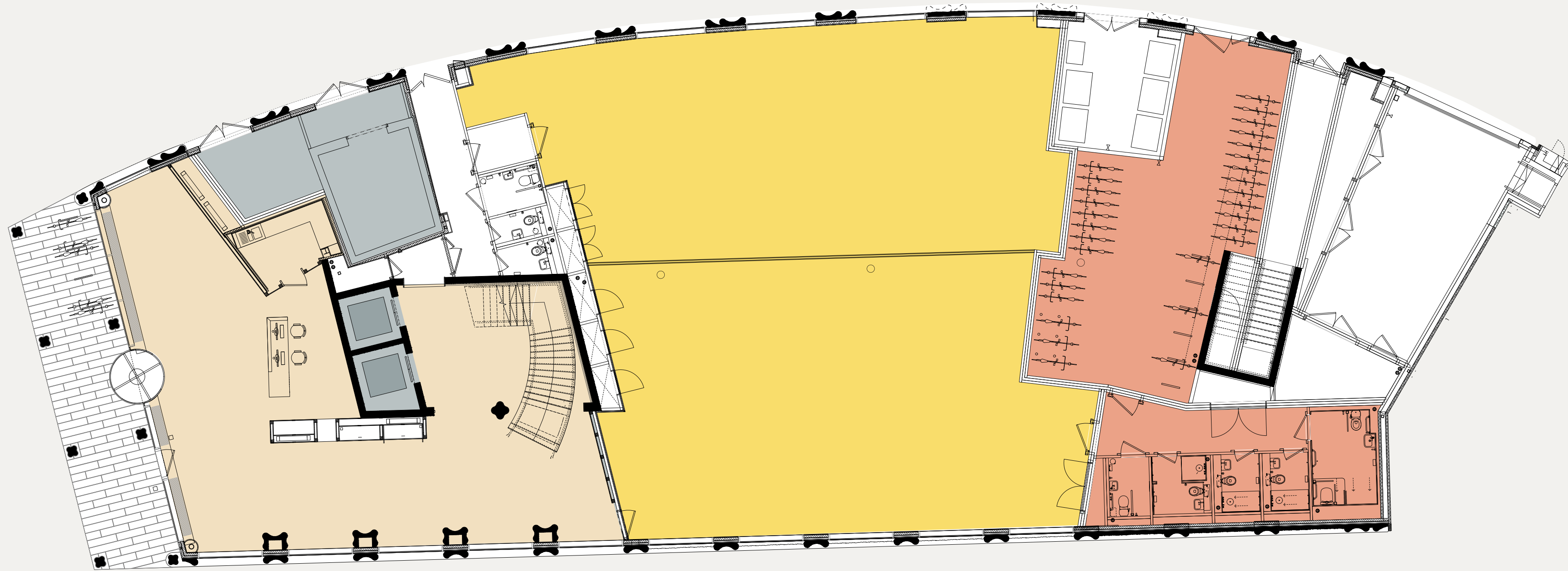
BARGE  
CRESCENT

SOUTH BANK

# FLOOR PLANS

# FLOOR PLANS

BARGE HOUSE STREET



UPPER GROUND

FLOOR

# G

KEY

- Office
- Core
- Reception
- End-of-trip

Floor plans not to scale.  
For indicative purposes only

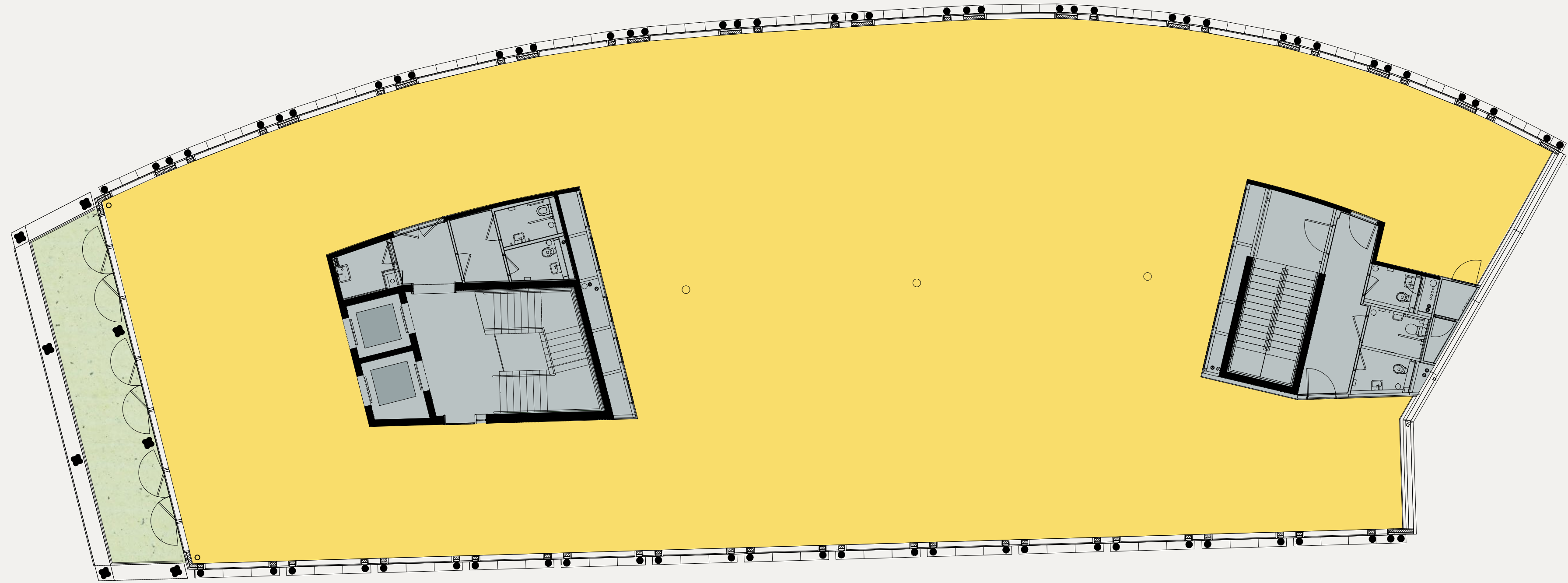
SIZE

# 3,972 SQ FT

# 369 SQ M

# FLOOR PLANS

BARGE HOUSE STREET



UPPER GROUND

FLOOR

# 01-03

KEY

- Office
- Core
- Terrace

Floor plans not to scale.  
For indicative purposes only

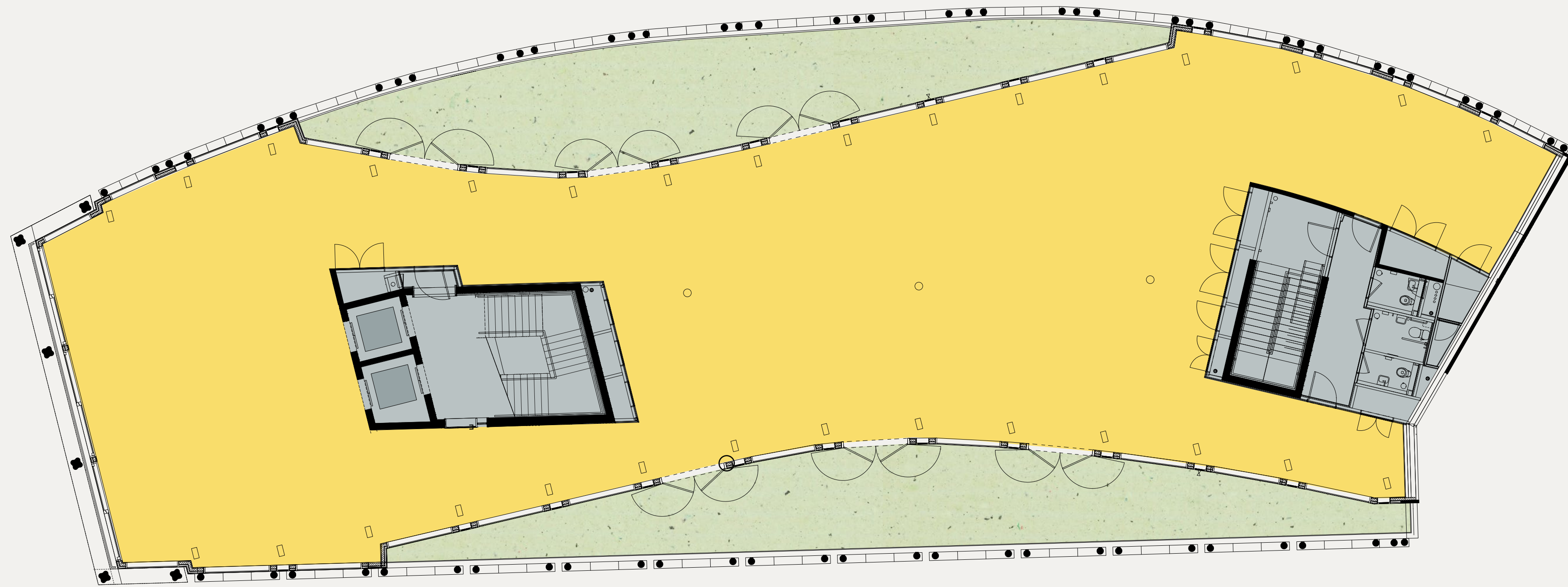
SIZE

8,008 SQ FT  
744 SQ M

Terrace  
355 SQ FT  
33 SQ M

# FLOOR PLANS

BARGE HOUSE STREET



UPPER GROUND

FLOOR

04

KEY

- Office
- Core
- Terrace

Floor plans not to scale.  
For indicative purposes only

SIZE

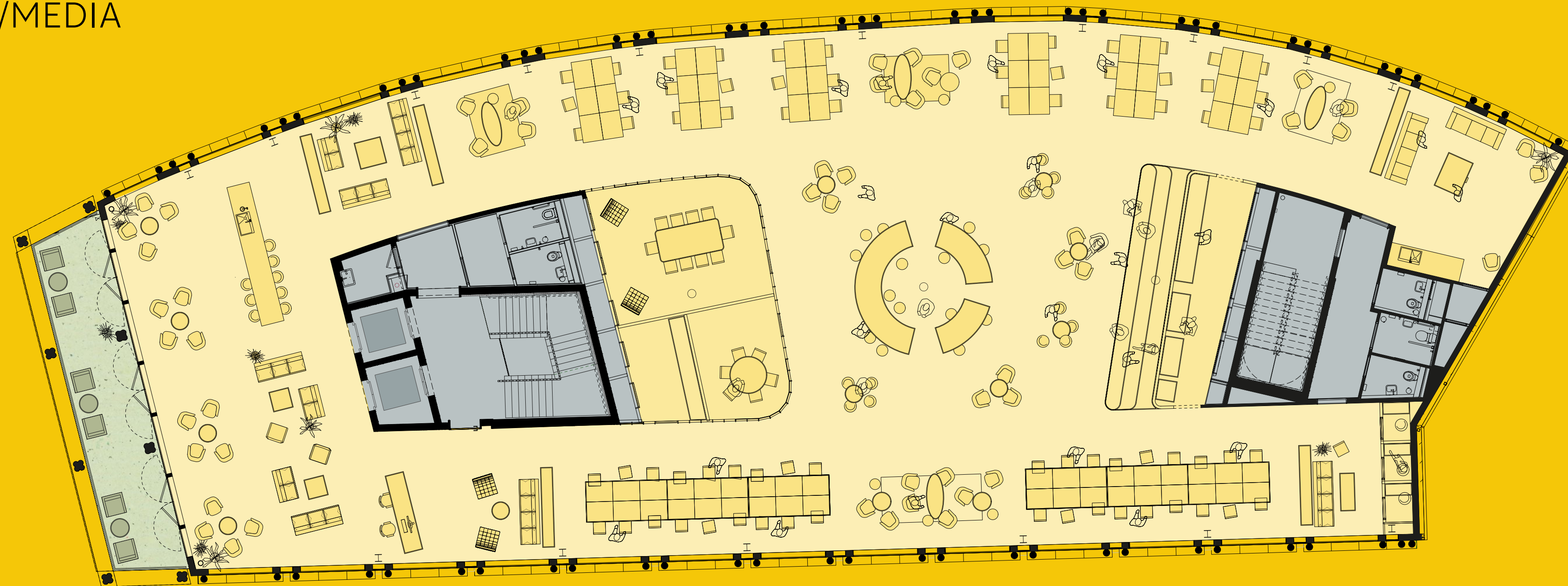
6,641 SQ FT  
617 SQ M

Terrace  
1,894 SQ FT  
176 SQ M

# SPACE PLANS

CREATIVE/MEDIA

BARGE HOUSE STREET

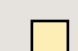




UPPER GROUND

FLOOR

# 01-03

### KEY

-  Office
-  Core
-  Terrace

Floor plans not to scale.  
For indicative purposes only

### SIZE

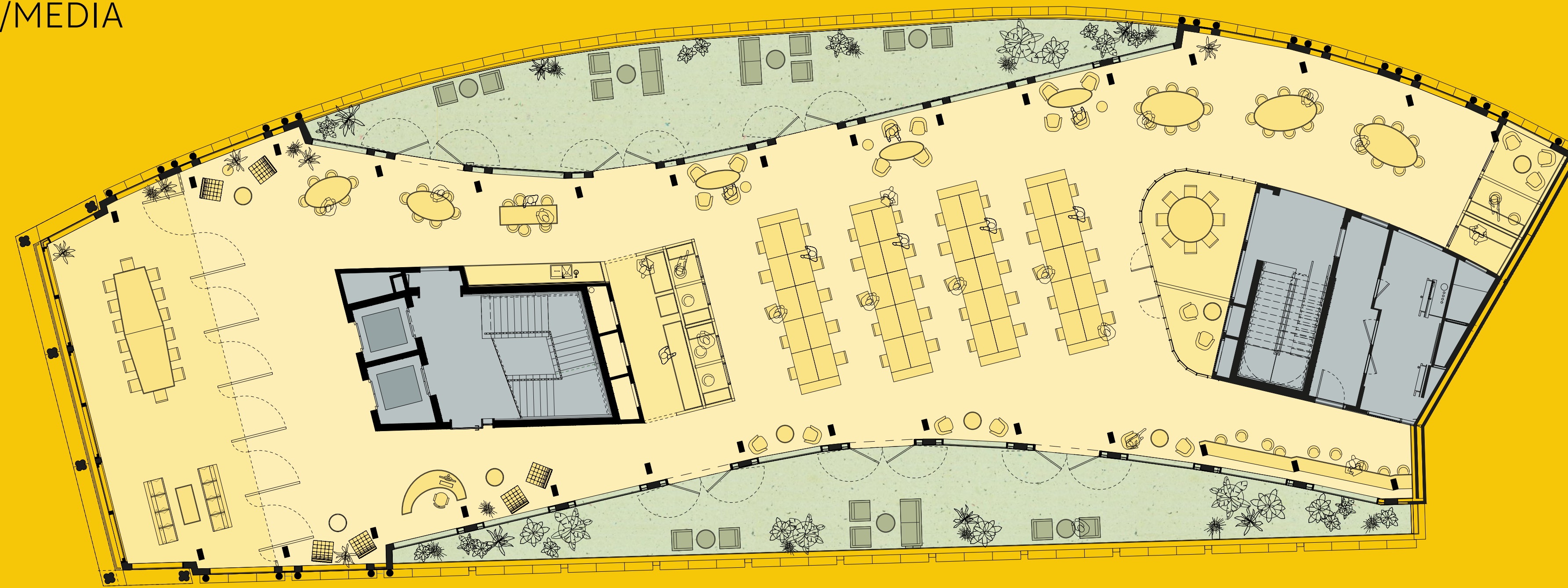
# 8,008 SQ FT

# 744 SQ M

# SPACE PLANS

CREATIVE/MEDIA

BARGE HOUSE STREET



UPPER GROUND

FLOOR

04

KEY

- Office
- Core
- Terrace

Floor plans not to scale.  
For indicative purposes only

SIZE

6,641 SQ FT  
617 SQ M